

Bugs Driving You Nuts?

The Hazelnut Weevil and Other Insect Pests of Hazelnuts

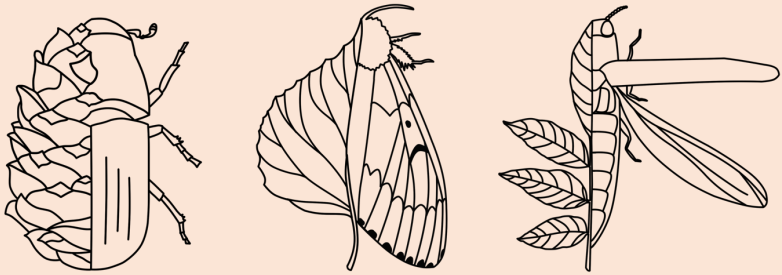


Hailey Shanovich and Brian Aukema

University of Minnesota

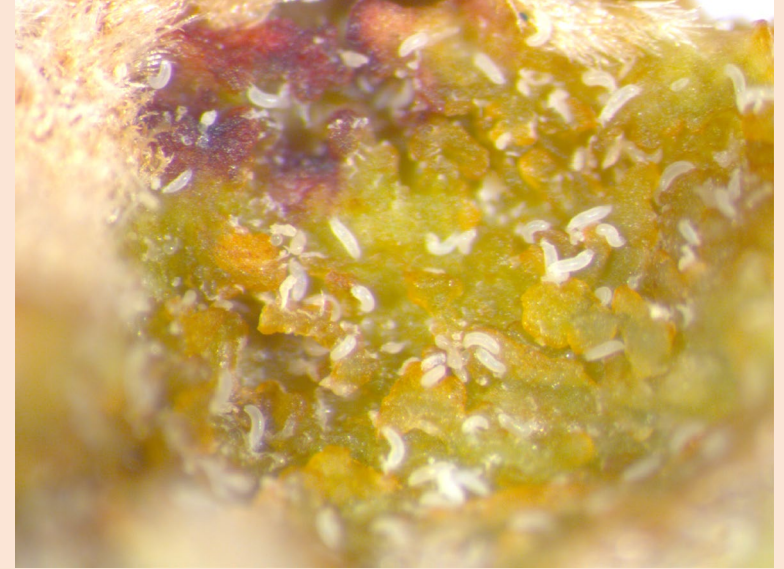
Department of Entomology

Aukema lab



FOREST ENTOMOLOGY
University of Minnesota





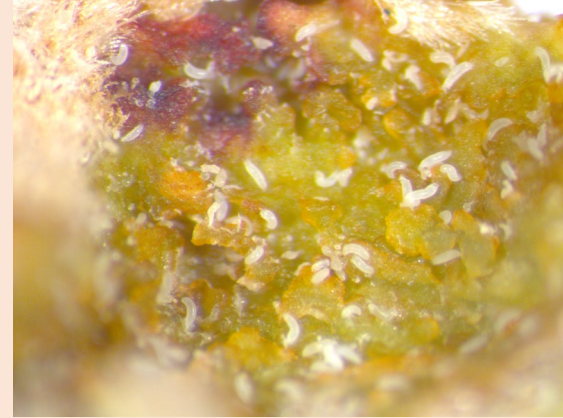
There are three main insect pests
in the Midwest



There are other minor pests as well



We want to hear from you!!!

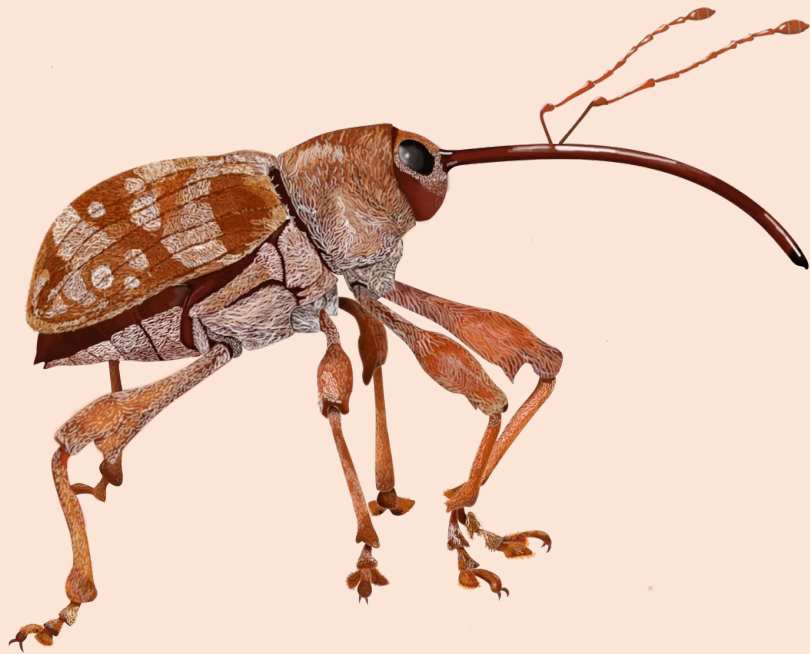


<https://tinyurl.com/hazelnutpests>

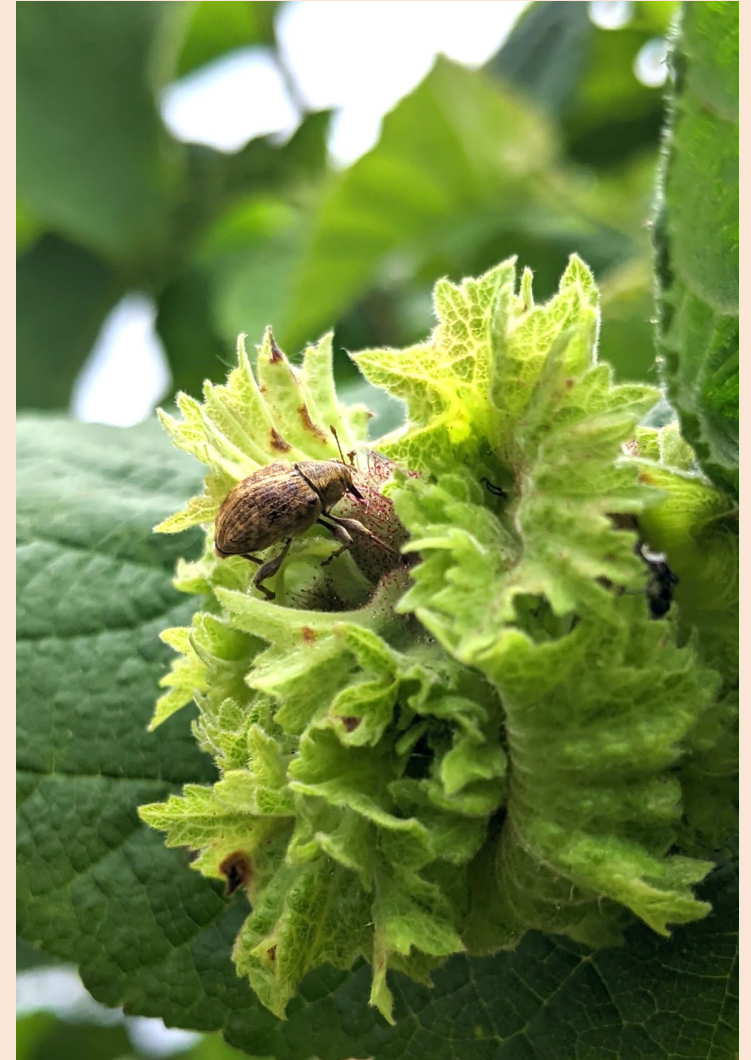


The hazelnut weevil

- Naturally associated with native wild hazelnut plants
- Already causing damage to hybrid planting throughout Midwest
- Similar species in other Europe and China that cause same damage



Adult female
hazelnut
weevils lay
eggs on
developing
hazelnuts





Larvae feed on the developing kernel



In our experience, weevils can infest up to 25% of hazelnuts in a field

Hazel-stem borer

- Naturally associated with native hazelnut species
- Already causing damage to some hybrid planting throughout Midwest
- Known to target weakened, older (>10 yrs) or diseased plants (e.g., drought stress)



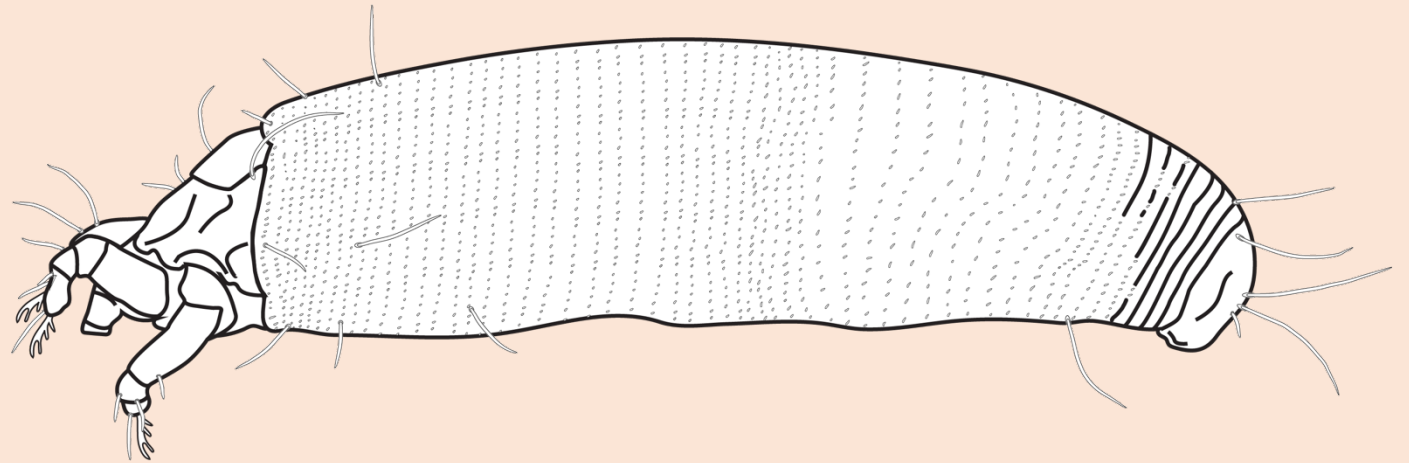
Photo by Tom Murray

Larvae tunnel through cambium eventually killing branch



Hazelnut big bud mite

- Introduced species from Europe
- Causes galls in both floral and vegetative buds causing “big buds”
- Hazel varieties vary widely in susceptibility
- Transported by wind or moving plant material around



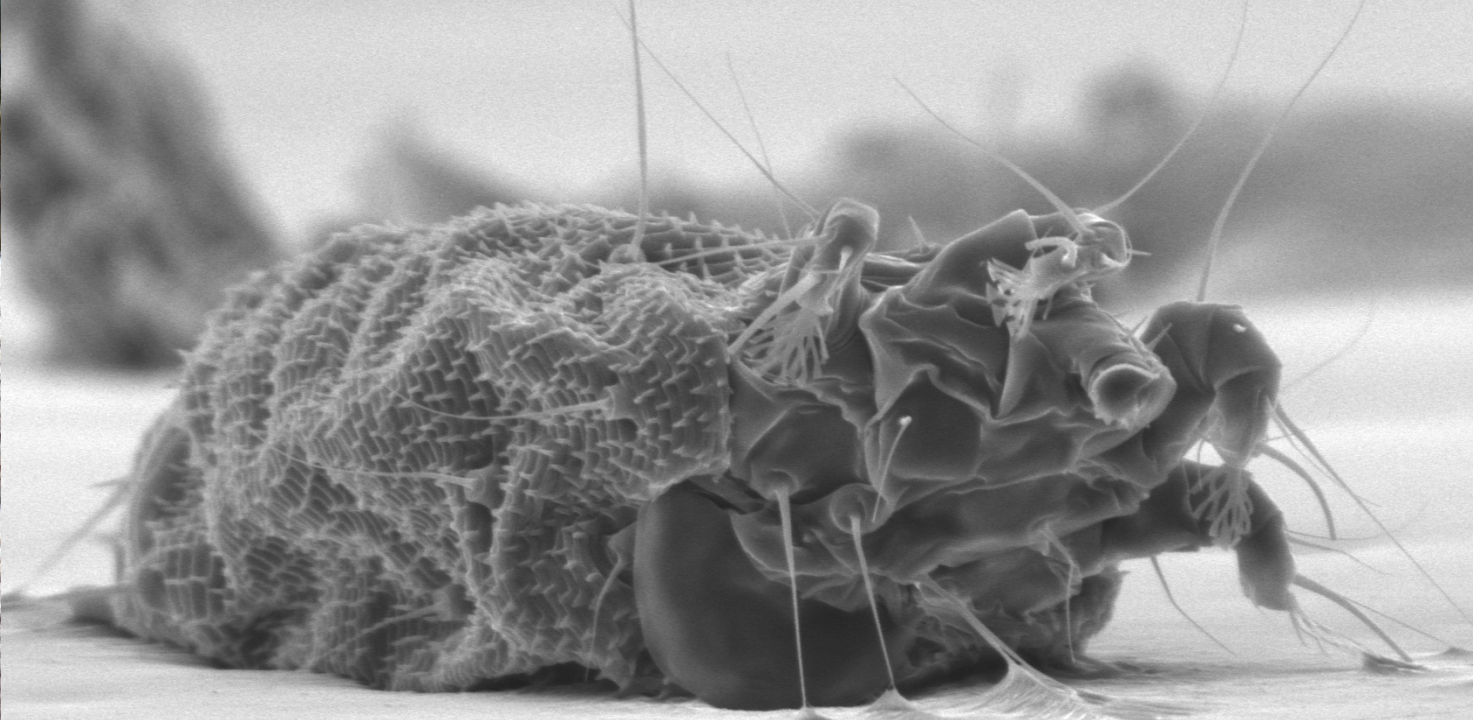
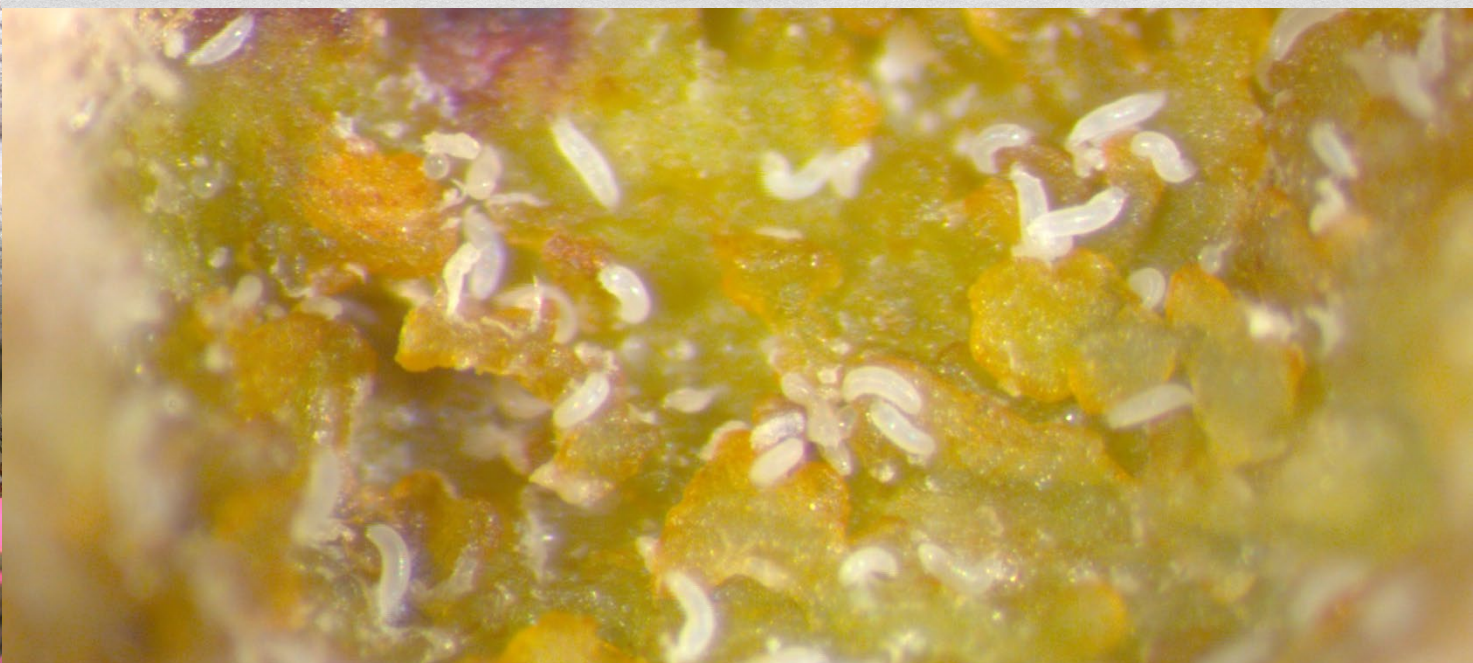
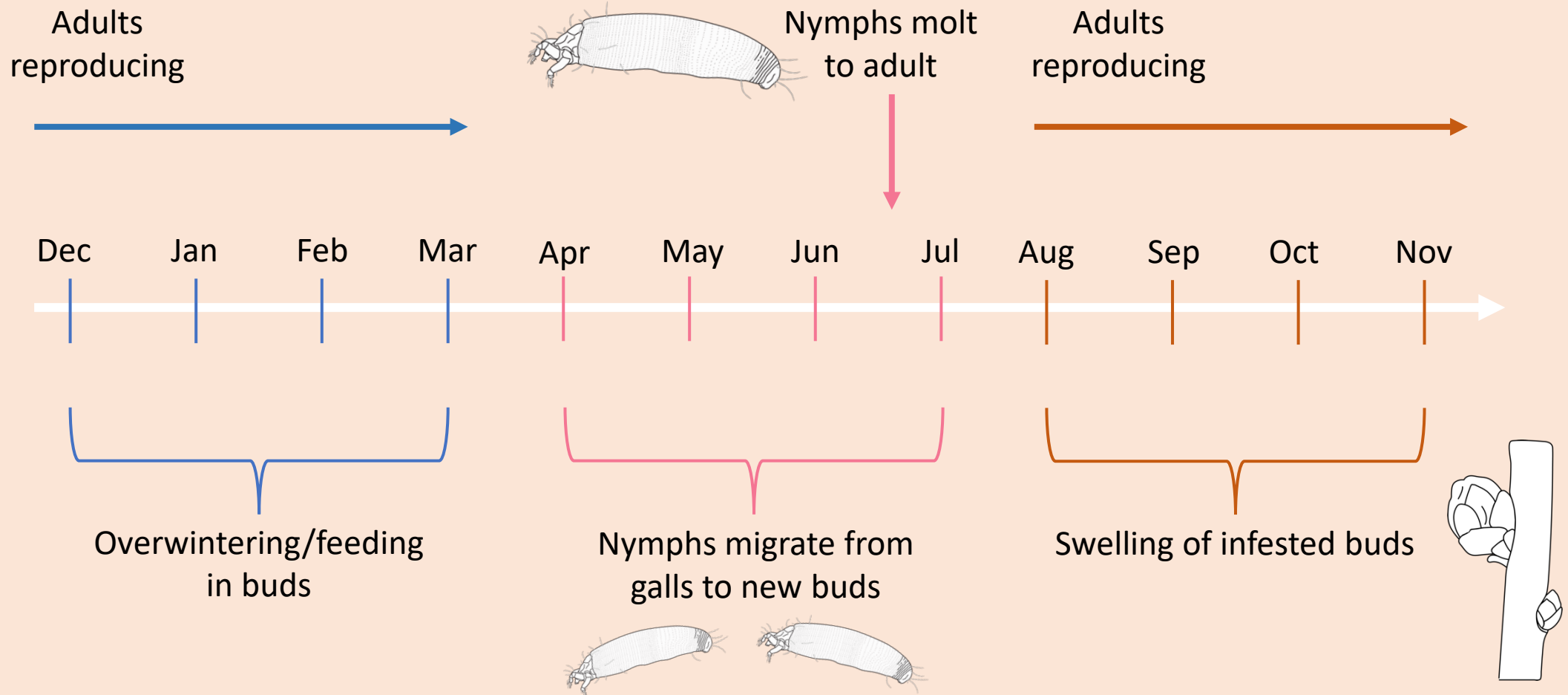


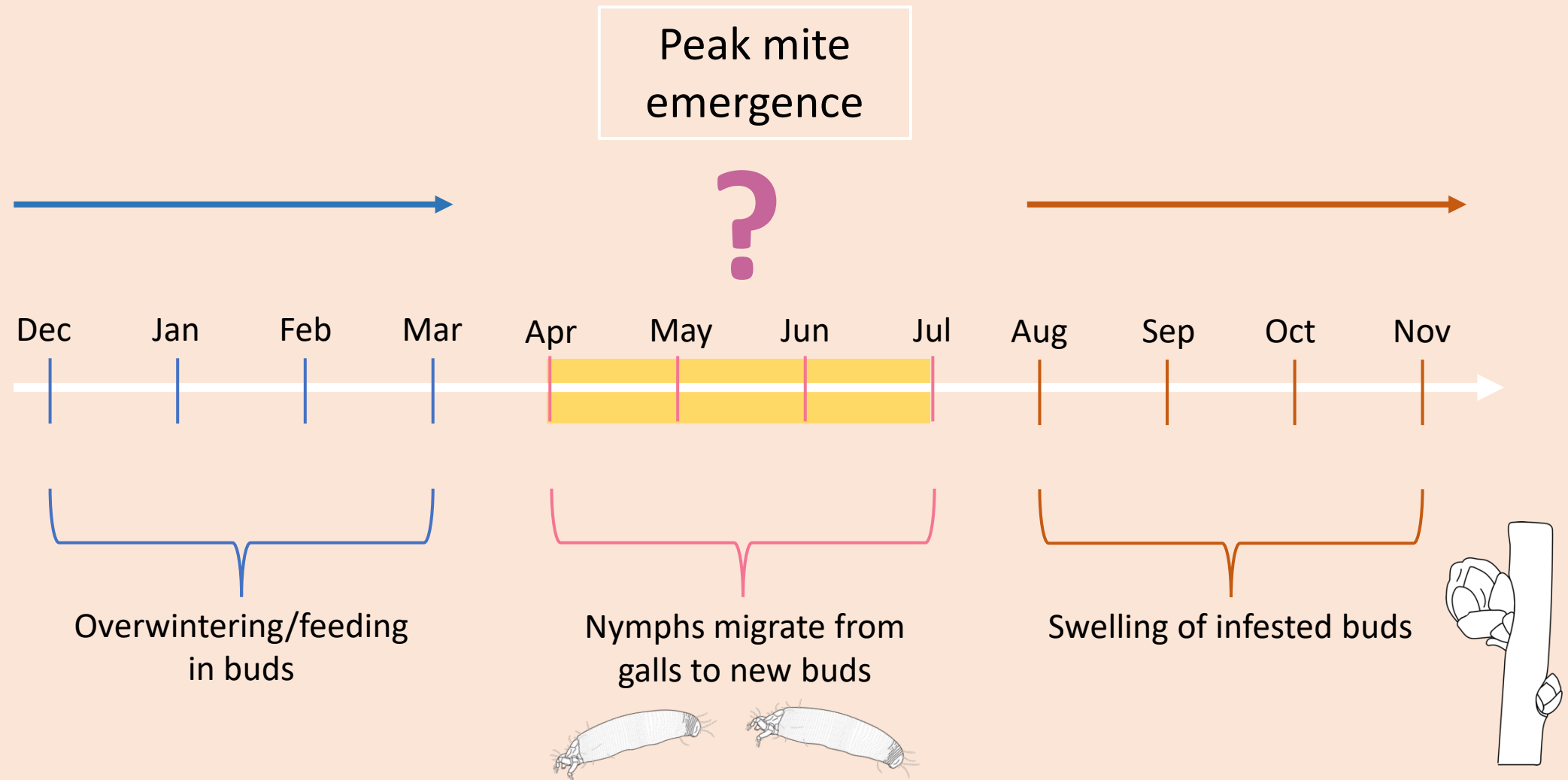
Photo credit: Hailey Shanovich and Pheylan Anderson (UMN Imaging Center)



Mites leave big buds in spring to migrate to new axillary buds

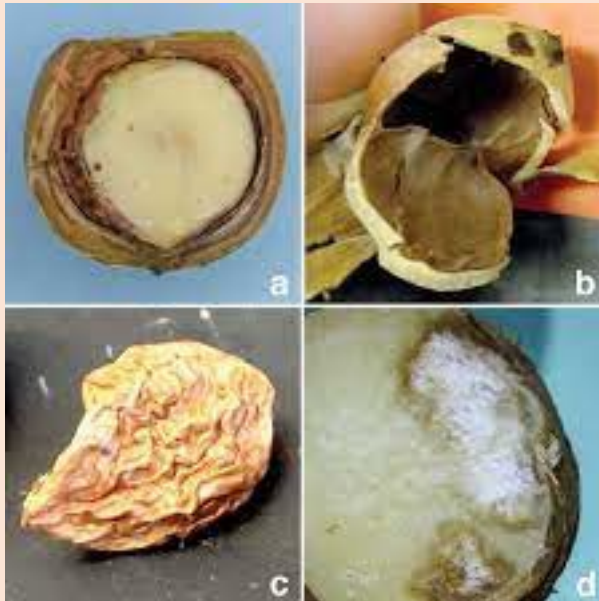


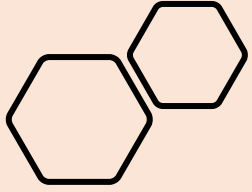
Mites leave big buds in spring to migrate to new axillary buds



Brown marmorated stink bug

- Introduced from east Asia; widespread throughout country now
- Feeds on many species of plant's fruits, seeds and nuts
- Has been reported to be causing damage to kernels in North Dakota and Nebraska in hazelnut





Thank you!

<https://tinyurl.com/hazelnutpests>



United States
Department of
Agriculture





Questions?